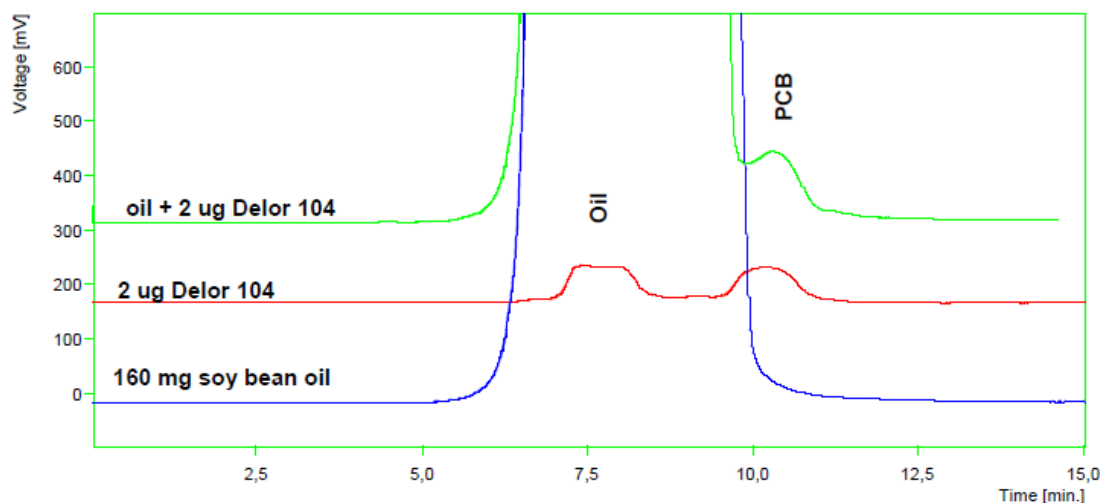


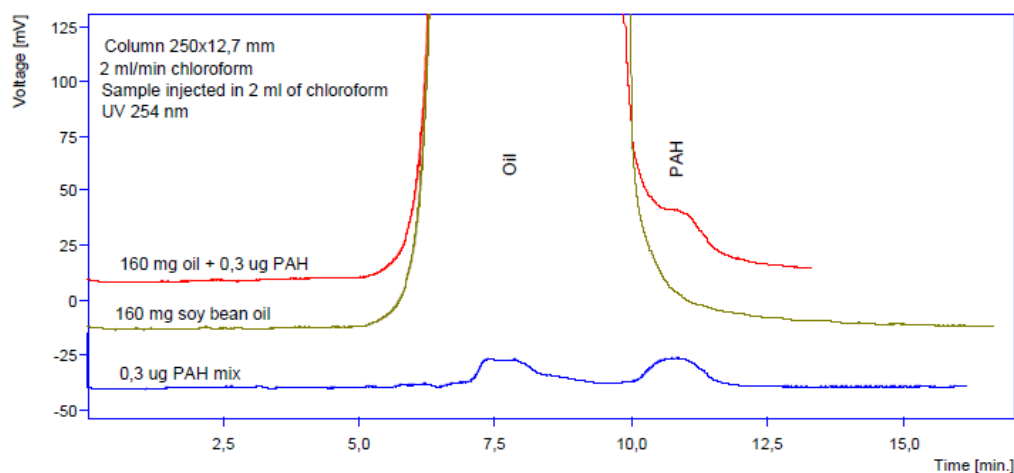
For stripping of polyaromatic hydrocarbons, polychlorinated biphenyls, pesticides and others in fat samples the GPC is widely used. Triglycerides (Mw 700-900) are eluted first, and smaller molecules of pollutants (Mw 200-300) are eluted remarkably later

Example: PCB fraction isolation from vegetable oil sample



Conditions: DeltaChrom™ SDS 030, 2,0 ml/min, Rheody ne 7725i, 2000 ul injection, Column: WATREX250x12,5 mm PAH Prep 10um, Eluent: chloroform, Detection: DeltaChrom™ UVD 200, 254 nm

PAH fraction isolation from vegetable oil



Conditions: DeltaChrom™ SDS 030, 2,0 ml/min, Rheody ne 7725i, 2000 ul injection, Column: WATREX250x12,5 mm PAH Prep 10um, Eluent: chloroform, Detection: DeltaChrom™ UVD 200, 254 nm

Influence of mobile phase composition – Fig.1 and Fig.2

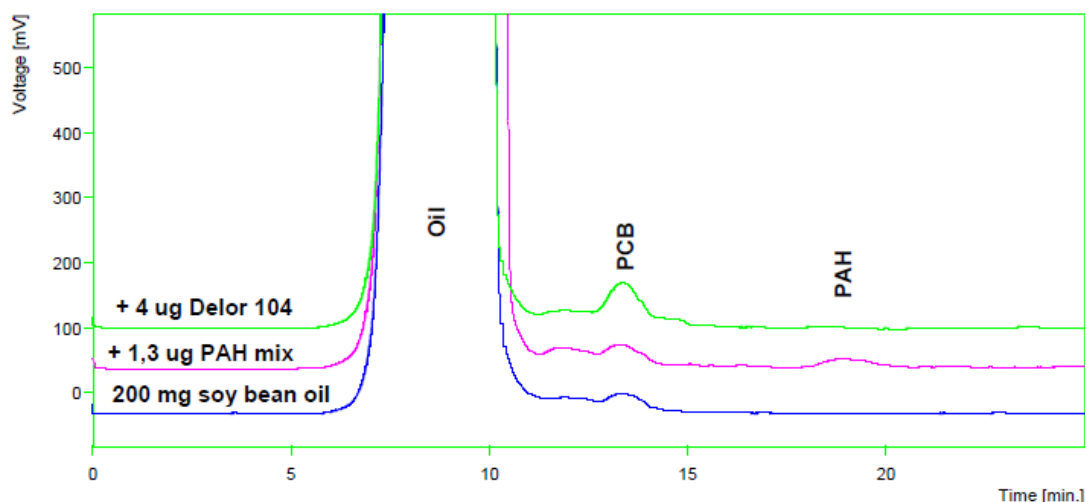


Fig.1

Conditions: DeltaChrom™ SDS 030, 2,0 ml/min, Rheodyne 7725i, 2000 ul injection, Column: WATREX250x12,5 mm PAH Prep 10um, Eluent: cyklohexane-ethylacetate 80:20 Detection: DeltaChrom™ UVD 200, 254 nm

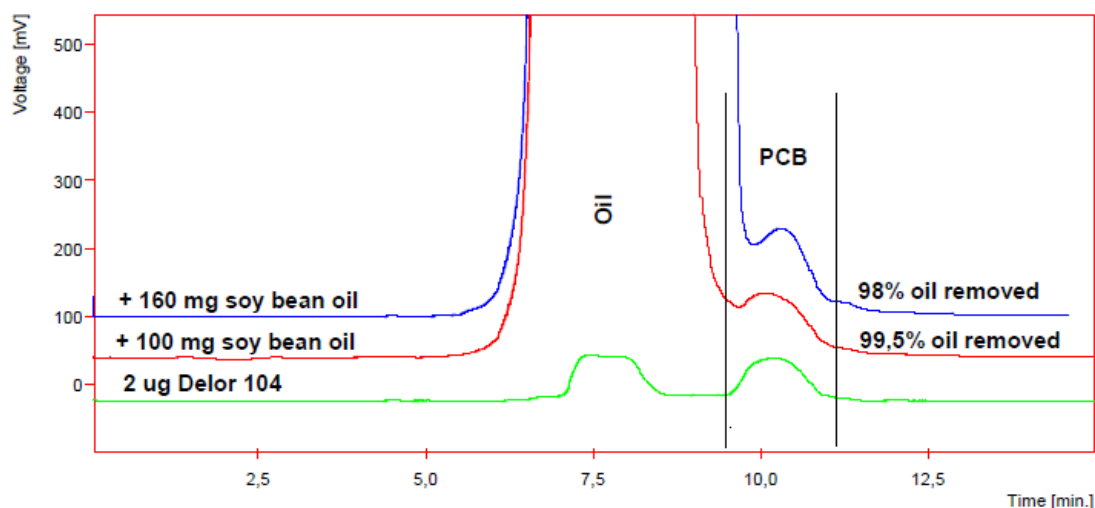
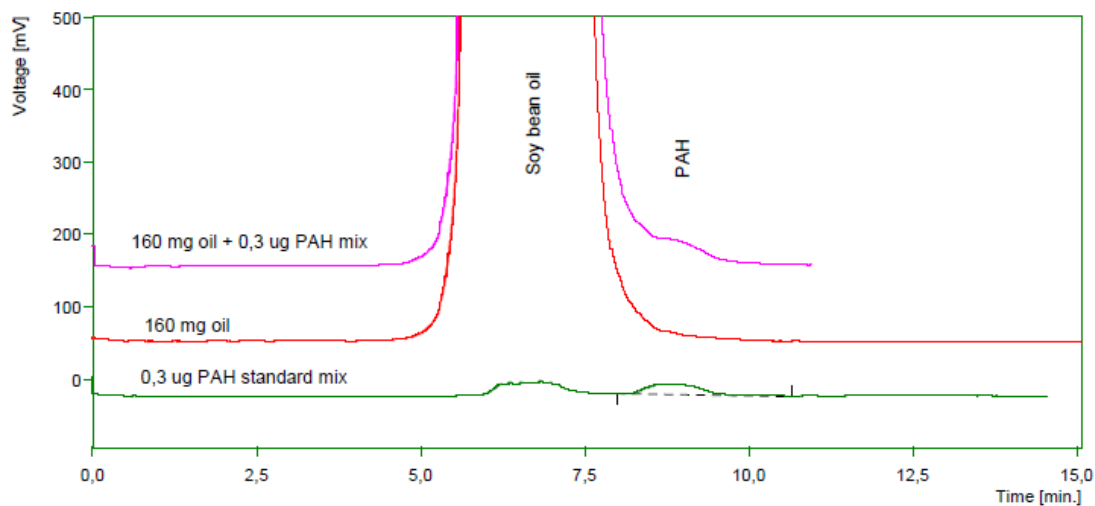


Fig.2

Conditions: DeltaChrom™ SDS 030, 2,0 ml/min, Rheodyne 7725i, 2000 ul injection, Column: WATREX250x12,5 mm PAH Prep 10um, Eluent: chloroform, Detection: DeltaChrom™ UVD 200, 254 nm

Influence of column dimensions



Conditions: DeltaChrom™ SDS 030, 2,0 ml/min, Rheody ne 7725i, 2000 ul injection, Column: WATREX 500x8xmm PAH Prep 10um, Eluent: chloroform, Detection: DeltaChrom™ UVD 200, 254 nm